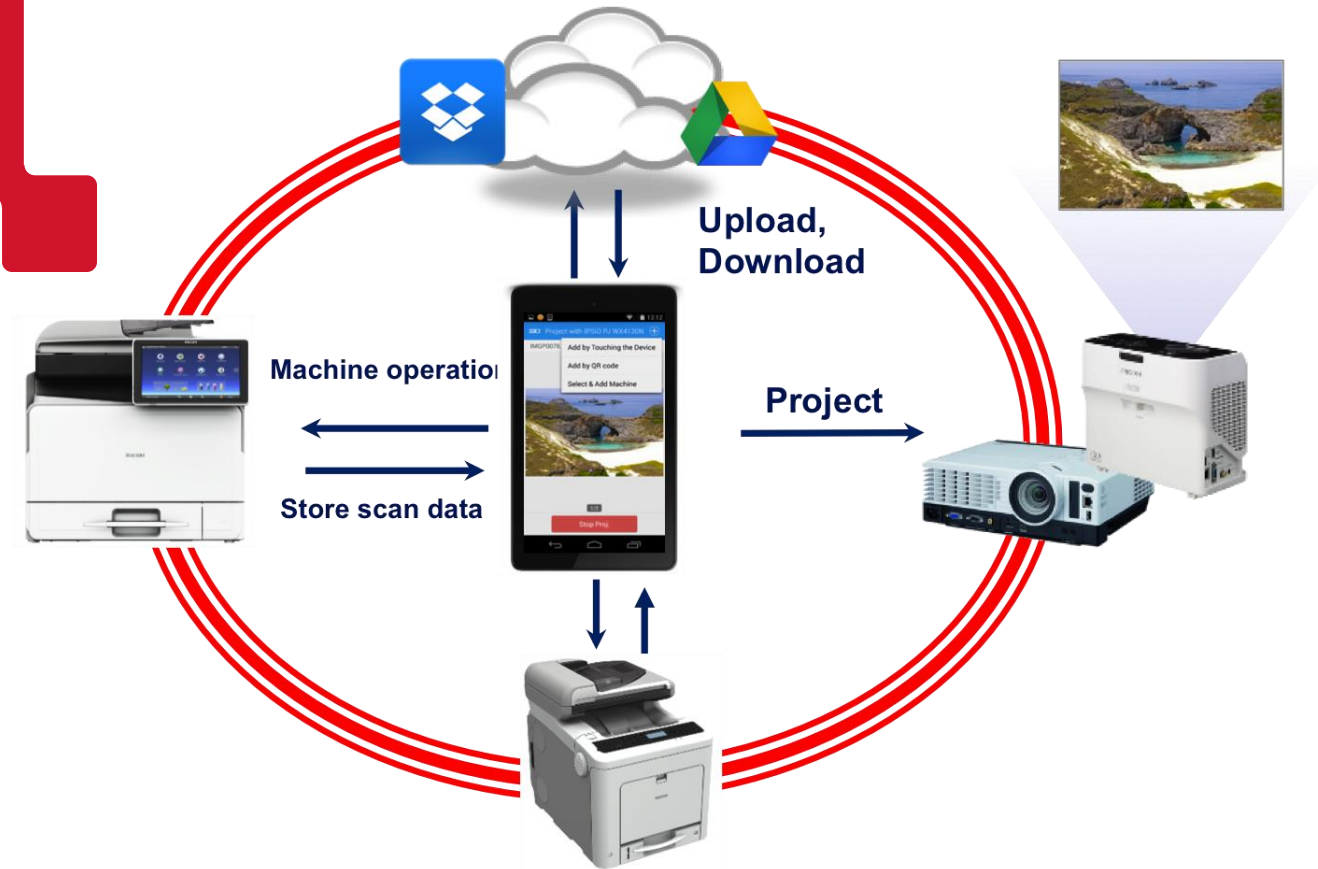


# Smart Device Connector

## Operation

**RICOH**  
imagine. change.

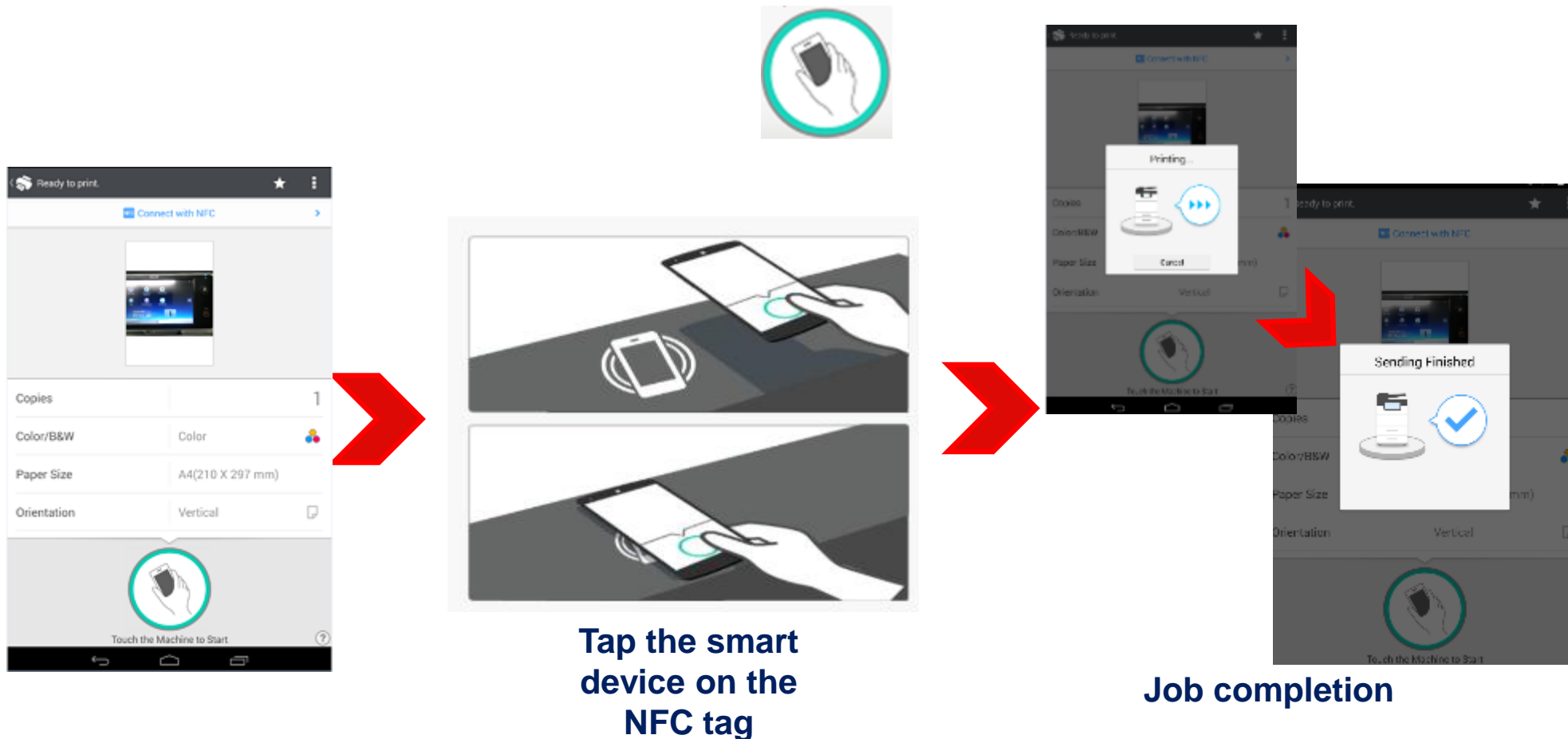
### Technical Reference



- Job Execution via NFC Tag
- Job Execution via QR Code
- Job Execution by Selecting an MFP
- Guest Use Priority (a setting for Android)

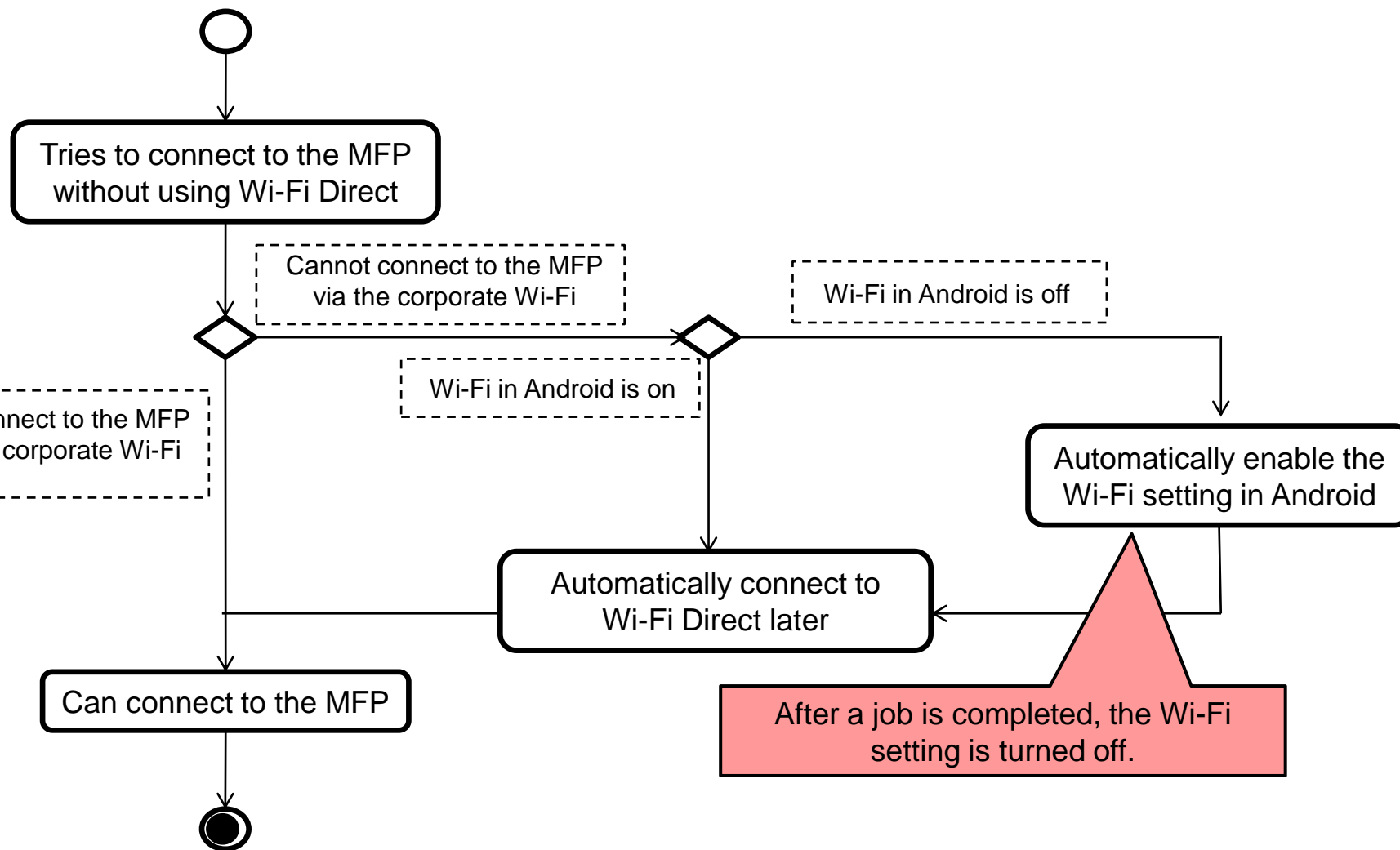
# Job Execution via NFC Tag

- To perform a job, tap the smart device on the NFC tag when the following icon is displayed:



# Flowchart for Android Smart Devices When Performing Jobs

## Tapping on the NFC tag

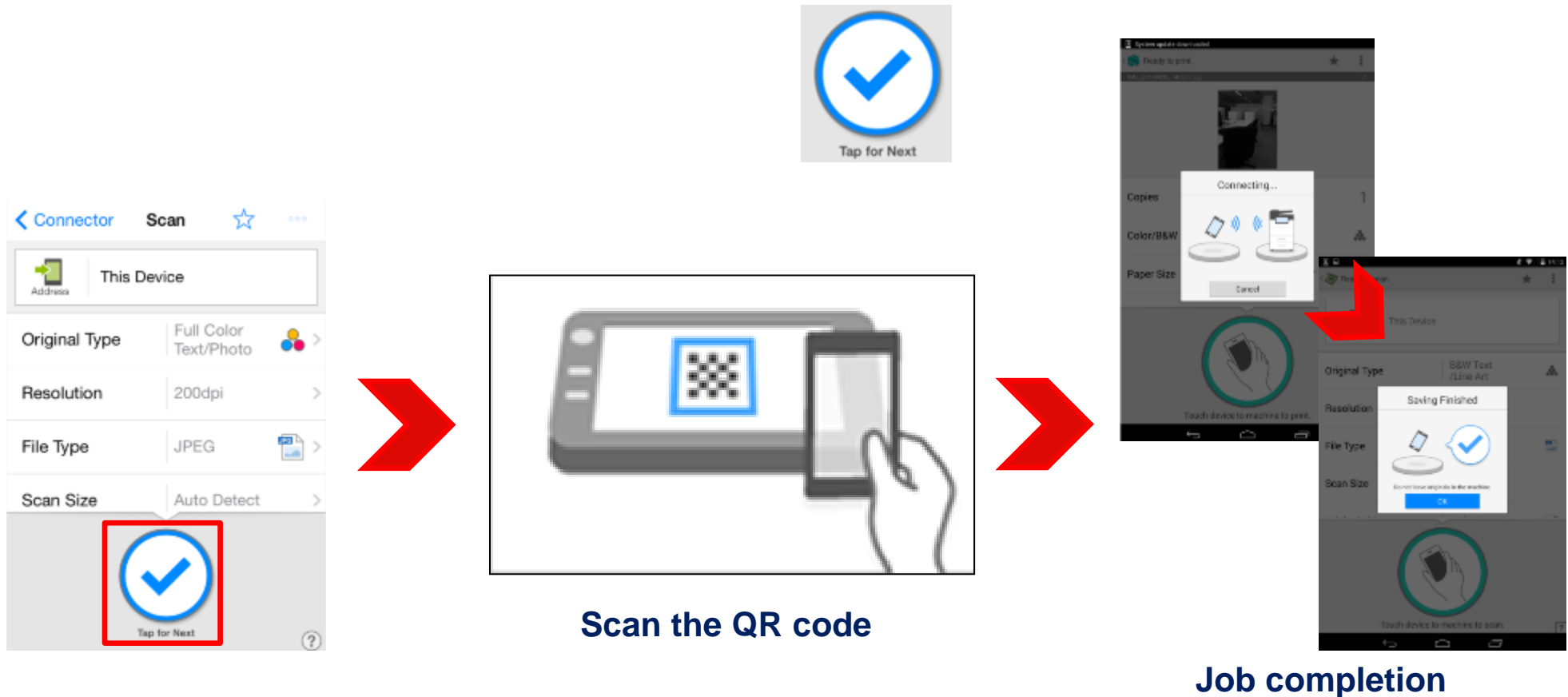


## Start processing a job

- Job Execution via NFC Tag
- Job Execution via QR Code
- Job Execution by Selecting an MFP
- Guest Use Priority (a setting for Android)

# Job Execution via QR Code

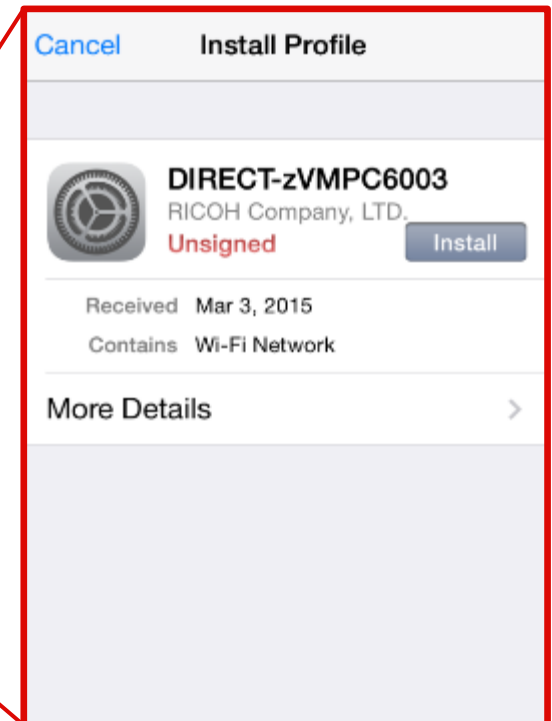
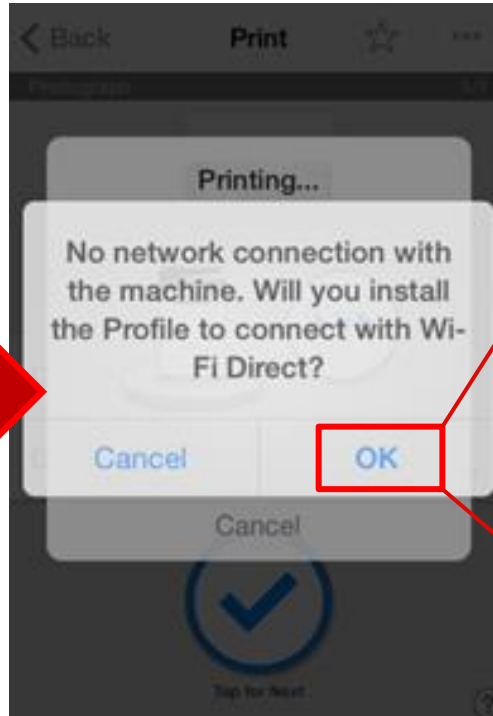
- To perform a job, scan the QR code when the following icon is displayed:



# Profile for the Wi-Fi Direct Connection

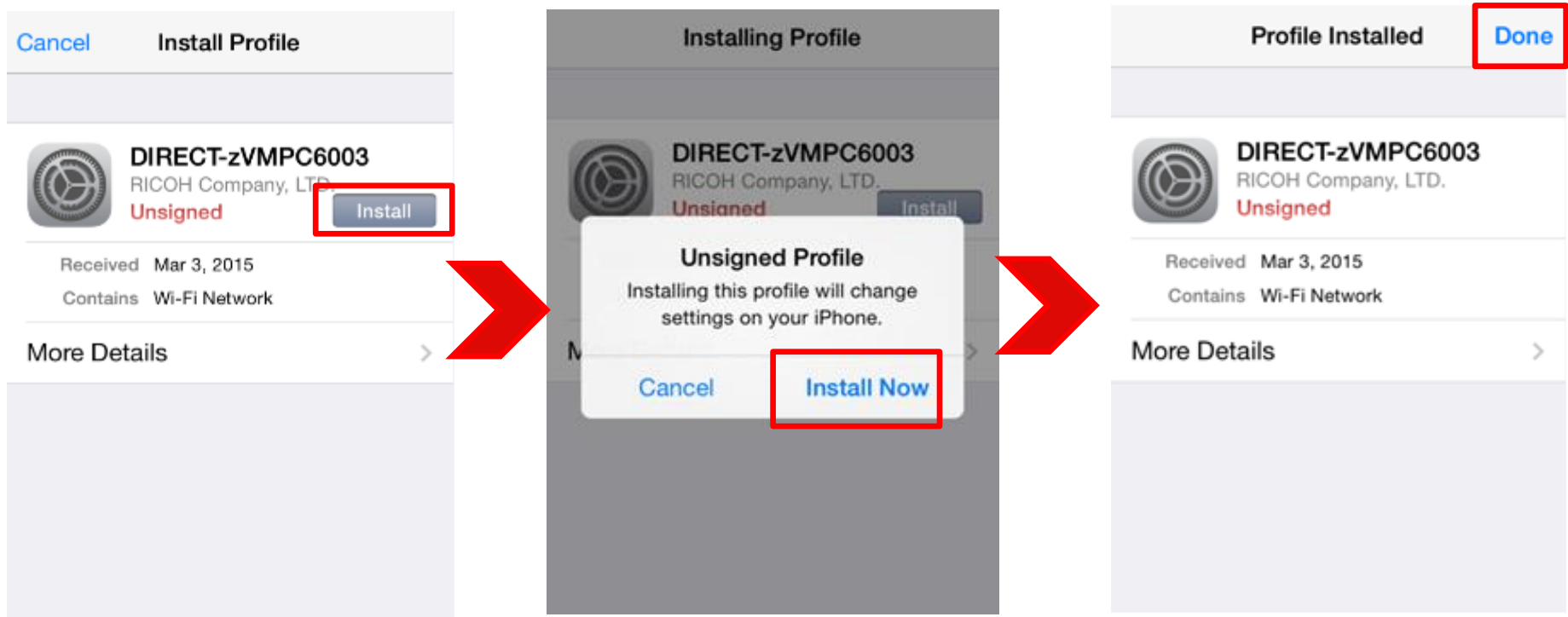
## ■ Wi-Fi Direct case

To establish a Wi-Fi Direct connection between an iOS smart device and the SOP, a profile needs to be installed on the iOS smart device. This profile is created by the RICOH Smart Device Connector application.



## ■ Why is installing a profile required?

The profile contains data that is related to Wi-Fi Direct, which allows the device to connect to the SOP panel SSID and password are registered in iOS under the Wi-Fi settings without manually entering an SSID and password.



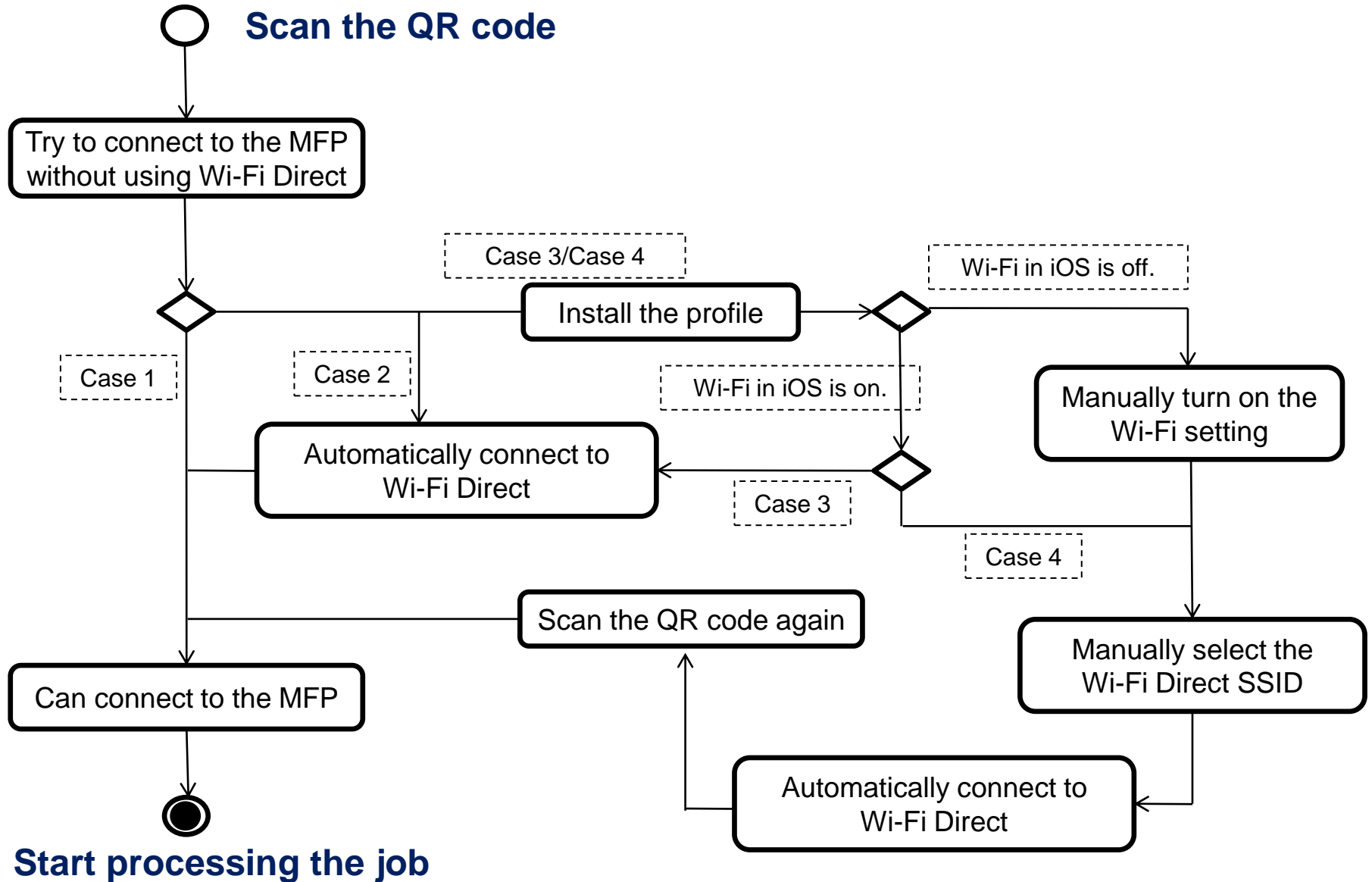


# Results Based on Which Wi-Fi Network the iOS Device Is Connected To

- The following are cases that show the relation between which Wi-Fi network the iOS smart device is connected to before scanning the QR code and after scanning the QR code:

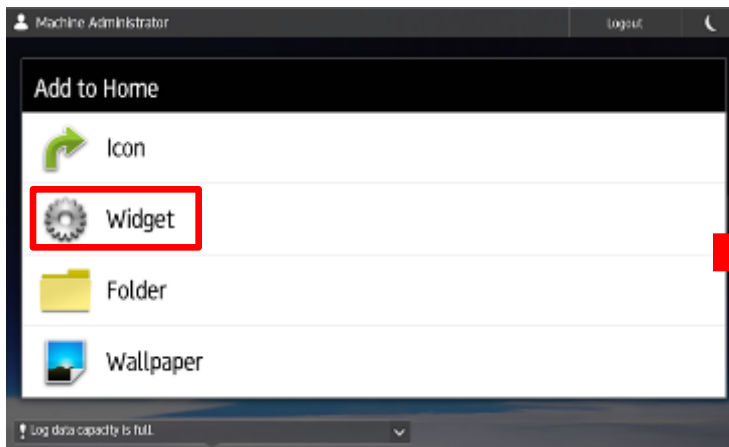
Case	Condition of the connected Wi-Fi network in an iOS device just before scanning the QR code	Allow Usage By Guest	Result after scanning the QR code
1	Connected to the corporate network to which the target MFP belongs	-	The iOS device connects to the MFP via the corporate network. After that, the job will start being processed.
2	Connected to Wi-Fi Direct that is served by the Smart Operation Panel	Yes	The iOS device connects to the Smart Operation Panel via Wi-Fi Direct. After that, the job will start being processed.
		No	Cannot connect to the Smart Operation Panel.
3	Did not connect to any network	Yes	After the profile, which is created by the Smart Device Connector, is installed on the iOS device to register the Wi-Fi Direct network information to the Wi-Fi network list in iOS, the device automatically connects to the Smart Operation Panel via Wi-Fi Direct.
		No	Cannot connect to the Smart Operation Panel.
4	Connected to a network other than the corporate network to which the target MFP belongs or Wi-Fi Direct (except for the networks mentioned in Cases 1 and 2)	Yes	After the profile, which is created by the Smart Device Connector, is installed on the iOS device to register the Wi-Fi Direct network information to the Wi-Fi network list in iOS, the connected Wi-Fi network needs to be manually changed to Wi-Fi Direct. After connecting to the Wi-Fi Direct network, the QR code needs to be scanned again. This operation is required for the Smart Device Connector to start processing jobs.  After completing the job, the iOS device will remain connected to the SOP via Wi-Fi Direct.
		No	Cannot connect to the Smart Operation Panel.

# Flowchart for iOS Smart Devices When Performing Jobs

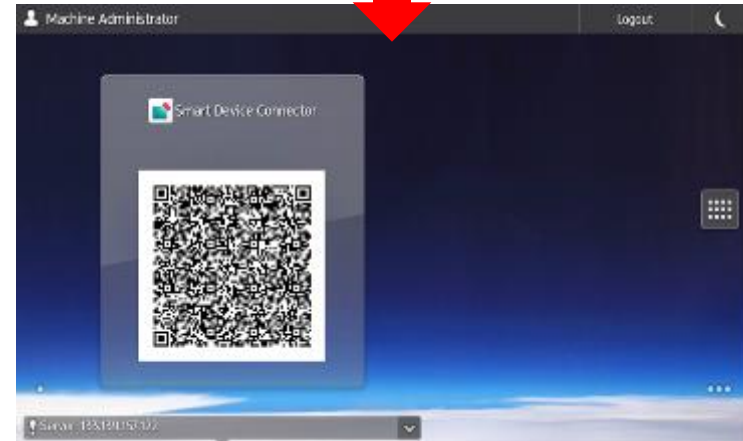
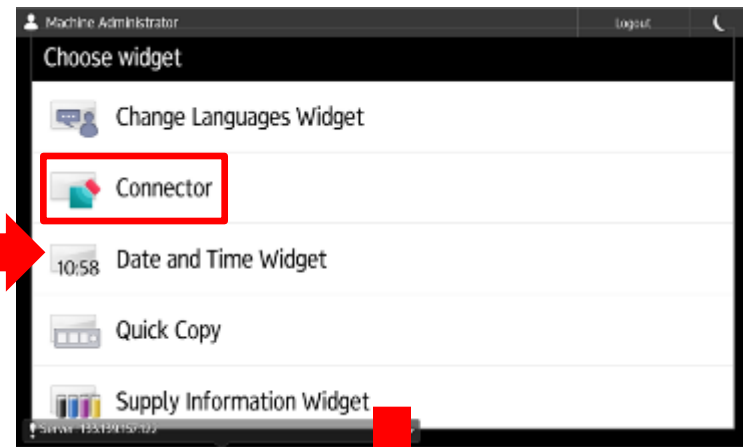


# QR Code Displayed by the Widget

- iOS smart devices do not use the NFC tag, so the QR code will need to be displayed on the operation panel for the two devices to be connected each time. The QR code can be displayed by using a widget on the SOP panel without launching the QR code application.

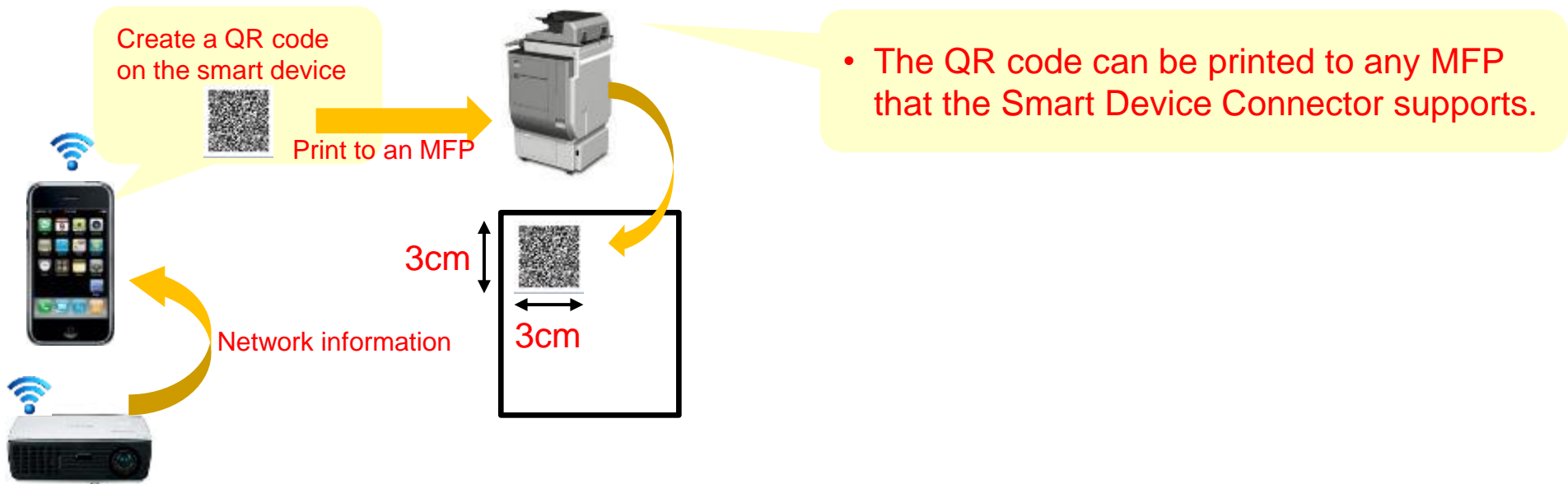


Long press on the SOP to show the menu.



# QR Code Printing (For Projectors)

- A QR code that contains network information for connecting to projectors can be created on the smart device and printed via an MFP.
- The outputted QR code image size is approximately 3cm x 3cm.



Note: The projector and smart device must be connected to the same network.

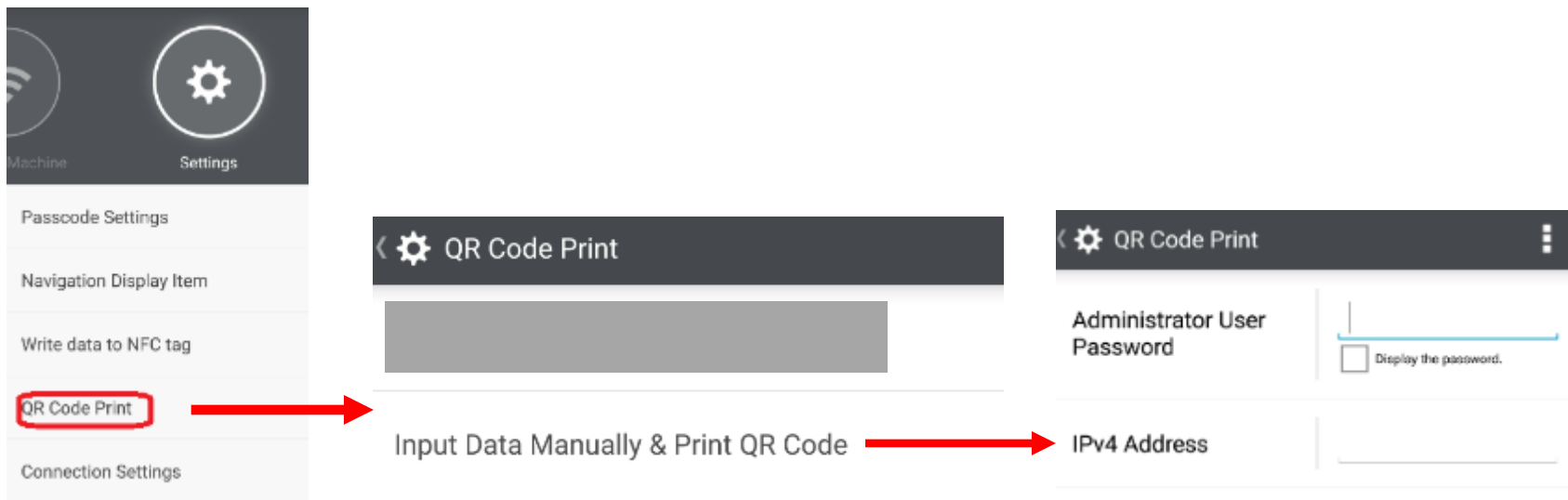
# QR Code Printing (For Projectors)

■ The following information is included in the QR code:

- Projector IP address/hostname
- QR code format type\*
- Device type (projector)\*
- Projector serial number\*

\*Not the information for connecting to the MFP.

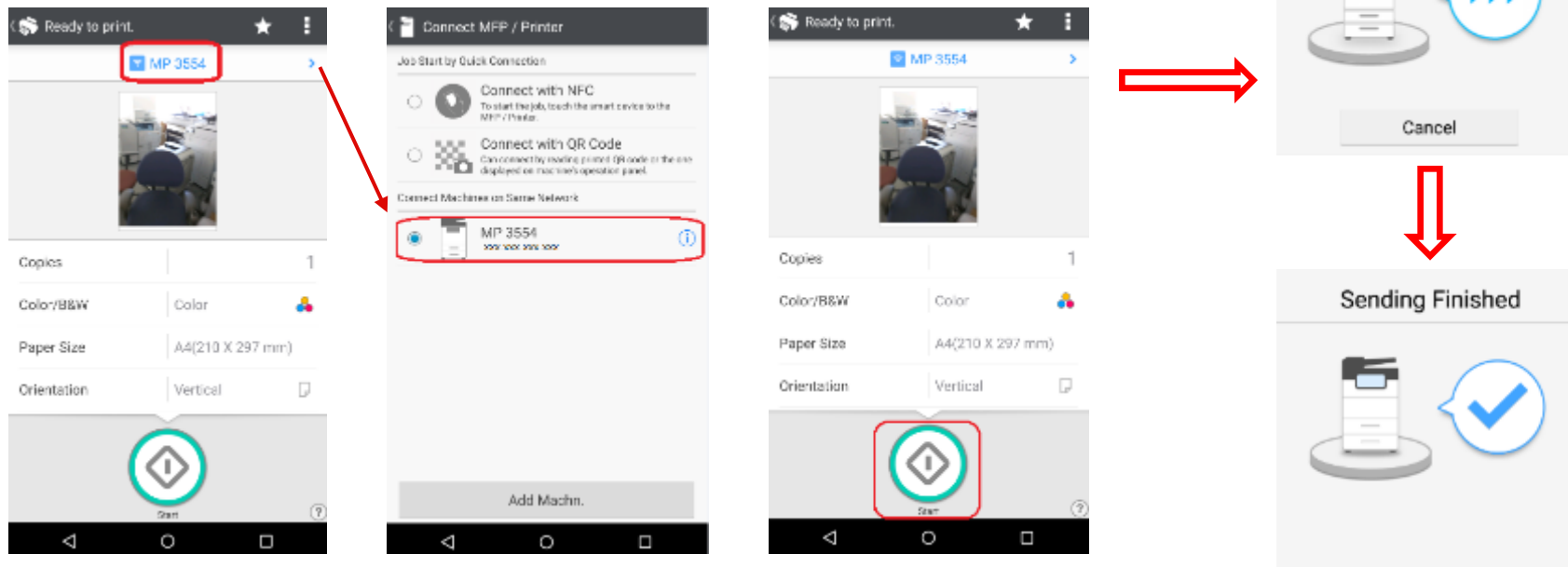
■ The network information that is required to create the QR code can be manually entered.



- Job Execution via NFC Tag
- Job Execution via QR Code
- **Job Execution by Selecting an MFP**
- Guest Use Priority (a setting for Android)

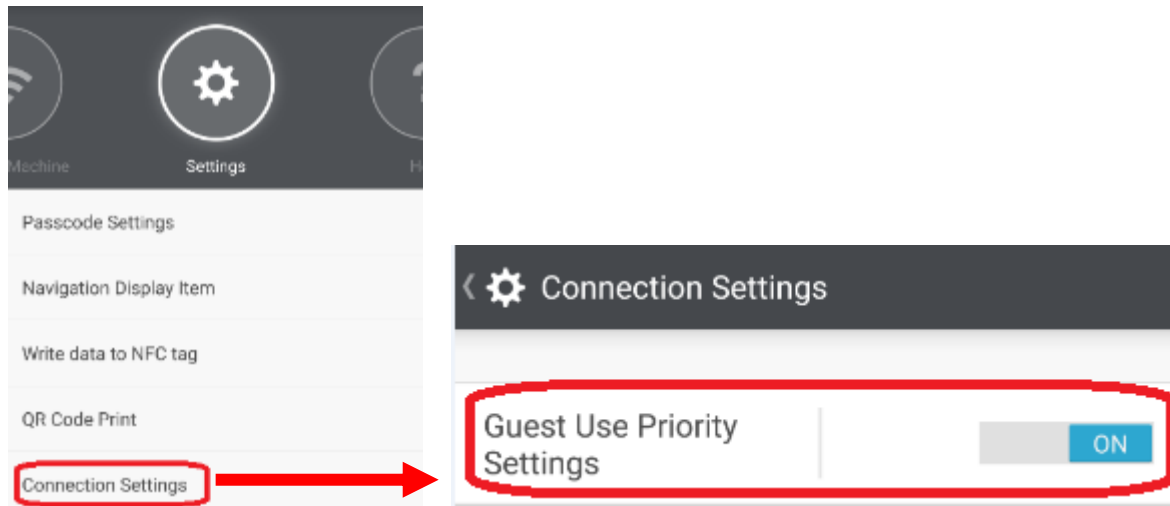
# Job Execution by Selecting an MFP

- To perform a job, select the target MFP and tap Start.
- Job execution by selecting an MFP can only be conducted via a corporate wireless network and not via Wi-Fi Direct.



# Guest Use Priority (Android)

- Connecting to the MFP via Wi-Fi Direct is preferred over connecting via a corporate Wi-Fi network.
- This setting is effective for shortening the connection time when the smart device connects to an MFP via a Wi-Fi Direct network and is assumed to be used where the smart device cannot connect to an MFP via a corporate Wi-Fi network.
- This setting is not available in iOS.



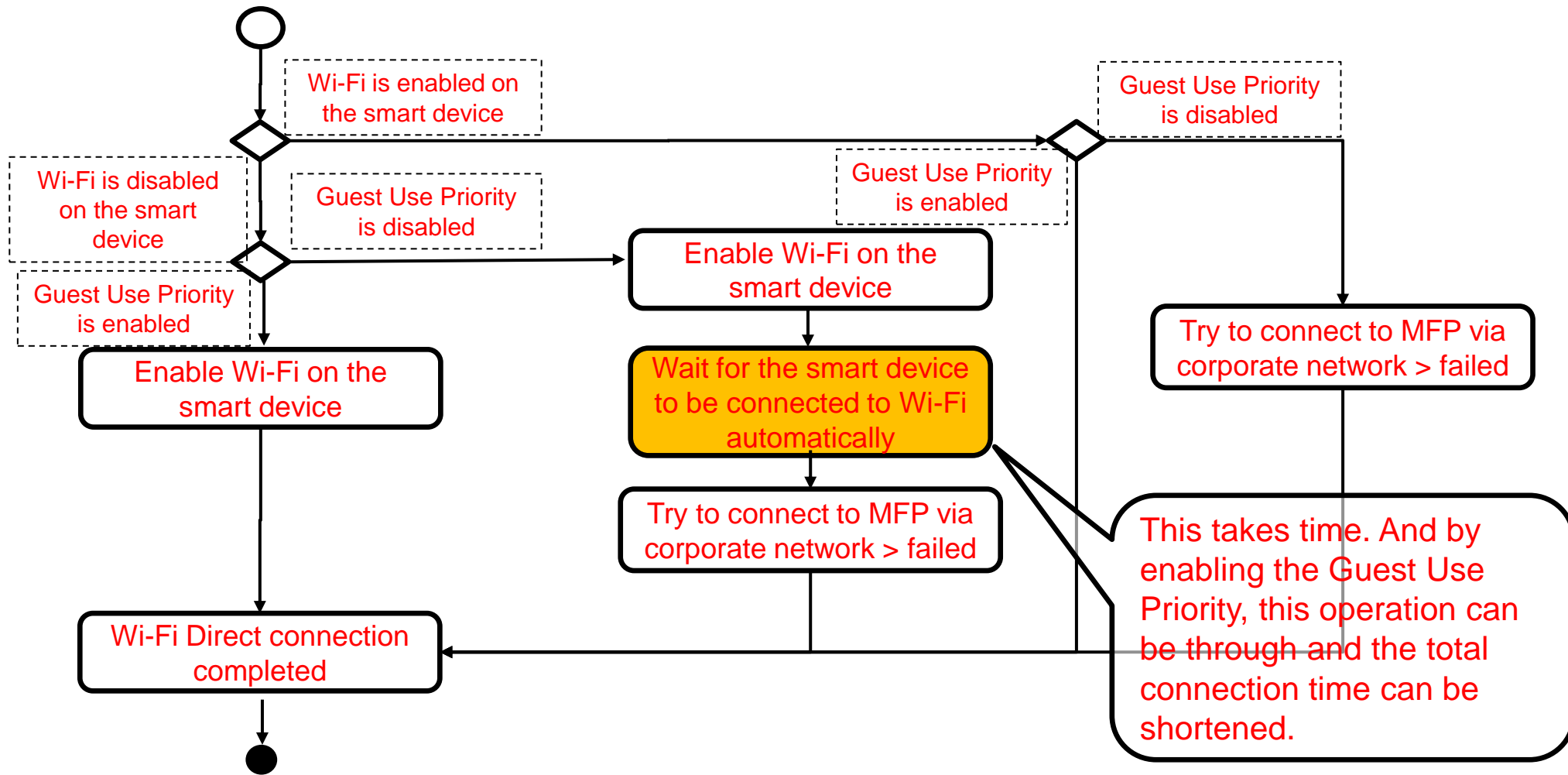


- Job Execution via NFC Tag
- Job Execution via QR Code
- Job Execution by Selecting an MFP
- Guest Use Priority (a setting for Android)



# Guest Use Priority (Android)

- Connection sequence via Wi-Fi Direct when the smart device cannot connect to the corporate Wi-Fi network:



**RICOH**  
imagine. change.